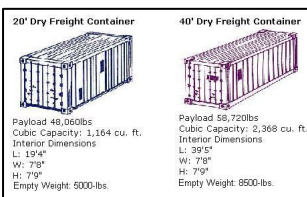


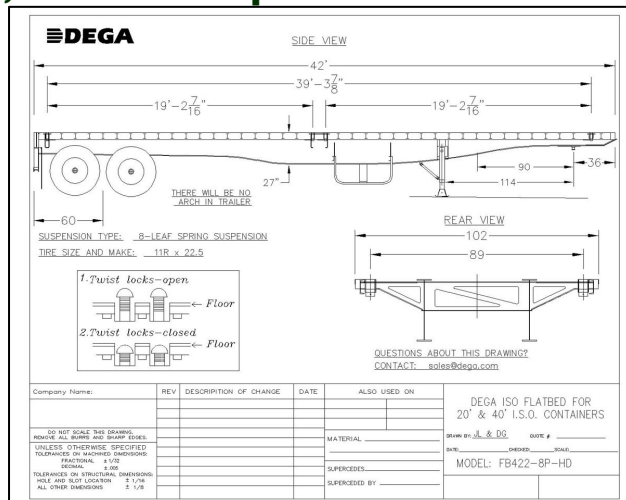


# PRATT ISO CONTAINER FLATBEDS

Since 1974



Our Next-Generation ISO Container Flatbeds and Chassis utilize several Heavy Duty components: Jost landing gear, 12" cross members, 130,000PSI main rails, 3/4" thick web, T1 flanges, 8-leaf spring suspension, H.D. Twist Locks, 1-3/8" Apitong wood floor, 25,000-pound axles, Urethane paint.



## Container Set Up Possibilities:

- One (1) 45' ISO Containers
- One (1) 40' ISO Containers
- Two (2) 20' ISO Containers
- One (1) 20' ISO Container

**DEGA-Pratt Exports Department**  
**748 S. Sherman Street, Suite 103**  
**Richardson, Texas 75081-4055 USA**  
**Tel: 972-479-0333**  
**Fax: 972-479-0336**  
**sales@dega.com**

