

# APACHE SQP SPECIFICATIONS

**General Specifications:**

Capacity of 200 yds per hour.  
All the air piping is factory installed.  
This plant is a complete plant on a single axle, and moves by one tandem axle truck-tractor.  
All the batching controls are electric-over-air manual.

**Aggregate Section:**

Three hinged compartment overhead storage, heaped cap. Of 47.6 cu. yds or 64.3 tons  
12 cu. yd. aggregate weigh batcher

**Transportation Section:**

Single axle 8.25 x 22.5 dual wheels & air brakes  
30" x 40' -0" Aggregate transfer conveyor:  
15 HP drive with reducer

**Cement Section:**

Capacity 1500 cub. Ft. (55.5 tons) 385 Max. BBL

**Plant Dimensions**

Overall Length, operating position - 48' 0"  
Travel length - 68' 2"  
Travel height - 14' 4"  
Travel width - 11' 0"  
Weight (approximate) - 43000 lbs  
Overhead bin charging height - 17' 2"  
Discharge height - 12' 6"

**Loadcraft Industries, Ltd.**

100 Ross Drive  
Early, Texas/ USA  
76802

**EXPORTS : DEGA**

Loadcraft In House Export Dept.  
+ 972-479-0333-Tel.  
+ 972-479-0336-Fax  
sales@dega.com



# APACHE SQP



Concrete Batch Plants

(866) 817-7838

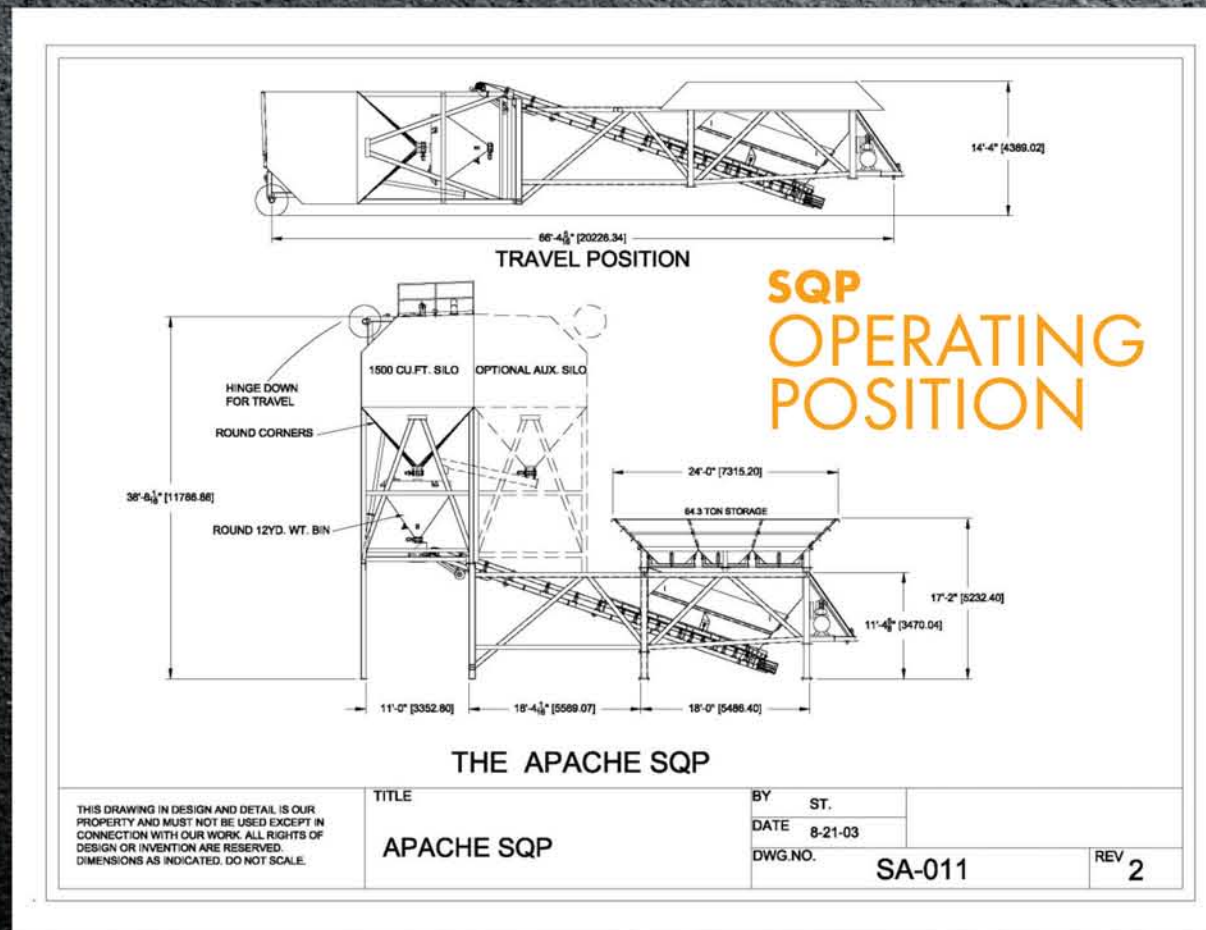


# LOADCRAFT CONCRETE BATCH PLANTS



## CENTRALIZED AIR PANEL

All solenoid valves are mounted in a NEMA enclosure with all the air inlet lines piped into the box and the exhaust air is piped out of the box. Each valve is equipped with a "quick" shut off valve to enable customer to isolate the solenoids for fast and safe change out.



## CENTRALIZED LUBRICATION SYSTEM (OPTIONAL)

All lubrication points on aggregate section can be piped to one location for easy one stop lubrication of all agg. gates and the tail of conveyor. All points are easily identified and located.

