

LOADCRAFT INDUSTRIES

CONCRETE BATCH PLANTS

[LOADCRAFT HOME](#)

[ABOUT US](#)

[BATCH PLANTS](#)

[MIXERS](#)

[SILOS](#)

[PARTS](#)

[CONTACT](#)

PARTS

IN STOCK TODAY: Air Cylinders, Solenoids, Vibrators, Butterfly valves (WAM & BRAY), Bearings, Air Pads, Troughing roller parts, Bin indicators, Mixer gears, Load cells, Rubber boots, Gates, Etc.

We have parts for ROSS tilt mixers: pinion gears, cylinders, cylinder pins, pivot pins, valves, paddles, and much more.



Standard Air Slides

10" x 2'0" With 10' Butterfly Valve.

Approximately 3000 cubic feet per hour, 50 cubic feet per minute



Troughing Rollers

30' X 35" Troughing roller assembly, replacement rollers, shafts, and bearings also available



Mixer Pins

One piece design, turn down from solid stock



Discharge Heads

24" Inside water ring, "V" plate

30" Inside water ring, "V" Plate

30" Exterior water ring, 6" pipe



Impact Rollers



Turnheads

Turnhead, with 1/3 hp drive, less controls, less proximity switches.

Turnhead with 1/3 hp drive, with control panel with indicator lights & proximity switches

Radio remote control



Gator Tuf-Tube

6" to 30" diameters available

Loadcraft can custom taper shrouds to fit any application, or any other needs



Gate Parts

8" Gate segments, with lub bolt, pair

8" Gate segments, with lub hanger

1" Lub bolt with nut

1" Bushing



Duplex Gates

Duplex Gate 12"X15"

Duplex Gate 15"X15"

Duplex Gate 18"X18"

Duplex Gate 24"X24"



Dust Bags

8" X 69" BAG, C&W STYLE

8" X 114" BAG, C&W STYLE

8" ROSS CA-20

8" ROSS V-200

7" X 84" BESSER, CUFF BOT, METAL CAP



Dust Cartridge

12.75"X 26" POLYESTER, ROSS TYPE

12.75"X 26" PAPER, ROSS TYPE

8"X 19" POLYESTER, C&W TYPE

8"X 39" POLYESTER, C&W TYPE

8"X 78" POLYESTER, C&W TYPE

6"X 20" POLYESTER, R&S TYPE

*other sizes also available



Butterfly Valves

2", 3", 4", 6" 8", & 10" BRAY/ BRAY ACTUATOR

6", 8", 10" WAM, SINGLE FLANGE

WAM SWTCH, MIC-22

BRAY LIMIT SWITCH

BRAY 1/4" SOLENOID VALVE



Air Pads & Mounting Kits

AERATION PAD WITH BRASS STUD, NUT AND WASHERS



Bin Indicators

BIN INDICATOR, MONITOR
BIN INDICATOR, MONITOR,
MT. PLATE
BIN INDICATOR, MONITOR, 3
VANE PAD



Vibrators

1 1/4", VIBCO, PISTON

VBS-190, VIBCO

BVS-320, VIBCO

2", BIG RED, PISTON

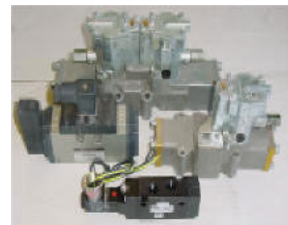


Air Cylinders

2"BORE, 8"STROKE

2 1/2"BORE, 6"STROKE

4"BORE, 8"STROKE



Solenoid Valves

S/B L705 SINGLE

S/B L695 DOUBLE (INCHING)

S/B B-511, 1/4"

S/B 1/4", INCHING

BIN INDICATOR, BANANA
 PADDLE
 BIN INDICATOR, MONITOR,
 FLEX COUP
 EXTENSION ROD, UP TO 3'-0"
 LONG

3/4" ASCO, DUST COL. TYPE. (C&W)

1" ASCO, DUST COL. TYPE. (ROSS)

1" ASCO, DUST COL TYPE.(C&W)



Bearings

- 1 1/2" SC FLANGE BEARING-4 BOLT*
- 1 3/16" 2-BOLT PILLOW BLOCK*
- 1 7/16" 2-BOLT PILLOW BLOCK
- 1 15/16" WIDE SLOT TAKE-UP*
- 2 3/16" WIDE SLOT TAKE-UP*
- 2 7/16" TYPE 'E' PILLOW BLOCK
- 2 7/16" SC WIDE SLOT TAKE UP*



Air Loader Pipe Elbow

4" 90 DEGREE ELBOW (SCH
 40,36" RAD)

4" 90 DEGREE ELBOW (SCH
 80,36" RAD)

5" 90 DEGREE ELBOW (SCH
 40,48" RAD)

5" 90 DEGREE ELBOW (SCH
 80,36" RAD)



Load Cells

3,000- POUND LOAD CELL
 ASSY

3,000 POUND LOAD CELL
 ONLY

5,000 POUND LOAD CELL
 ASSY

5,000 POUND LOAD CELL
 ONLY

10,000 POUND LOAD CELL
 ASSY

10,000 POUND LOAD CELL
 ONLY

20,000 POUND LOAD CELL
 ASSY

20,000 POUND LOAD CELL
 ONLY



Hose and Clamps

6" DIA. FLEX HOSE (PER
 FOOT)

8" DIA. FLEX HOSE (PER
 FOOT)

10" DIA FLEX HOSE (PER
 FOOT)

14" DIA FLEX HOSE (PER
 FOOT)

6" TO 10" HOSE CLAMPS
 14" CLAMP