



ASSEMBLED VIEW

27

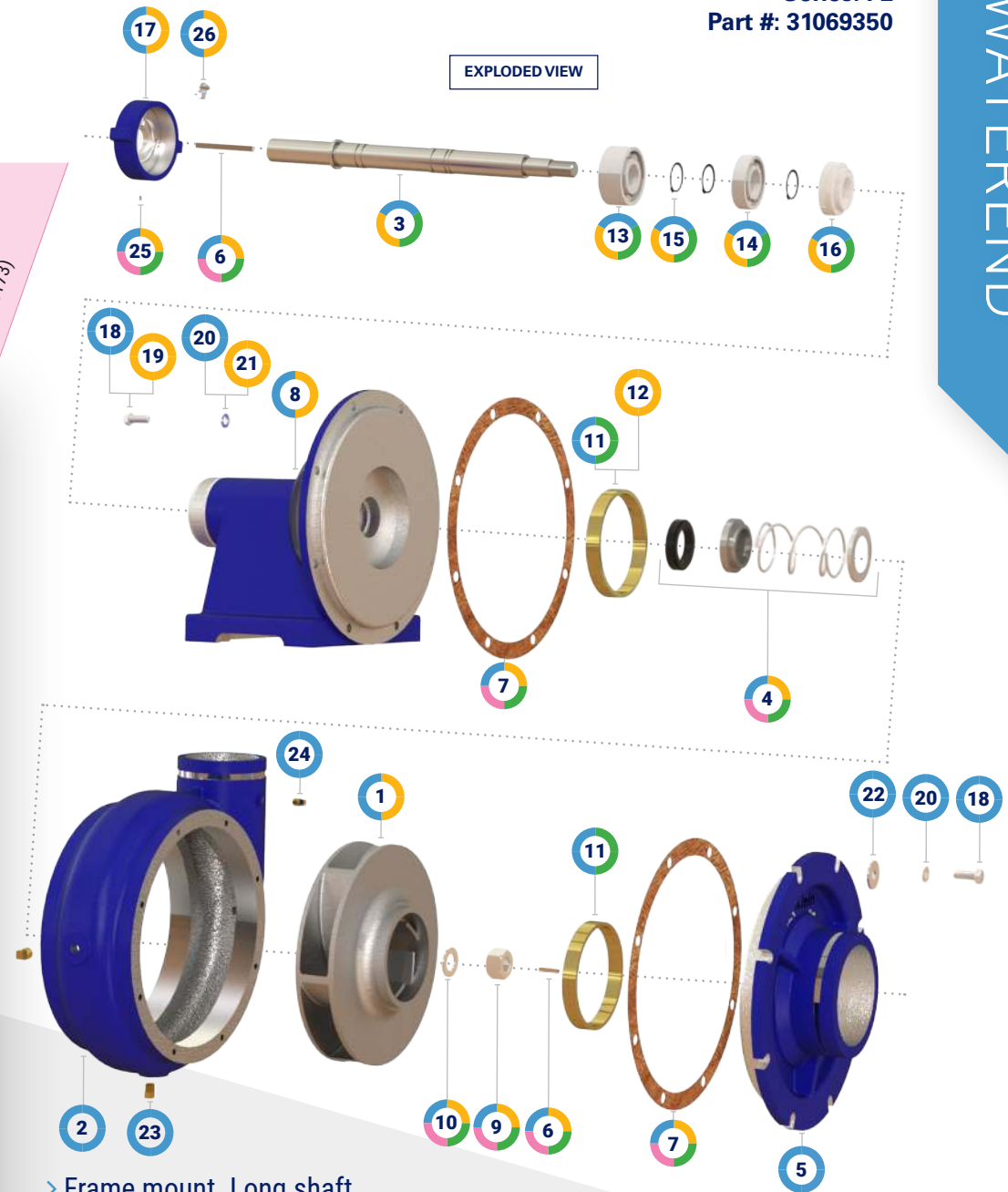
ITEM	DESCRIPTION	QUANTITY	PART NUMBER	WEIGHT (lbs.)	PUMP ASSEMBLY (31069350)	POWERHEAD ASSEMBLY (31085920)	REBUILD KIT (44077503)	SEAL KIT (33078173)
1	Impeller	1	31068176	19	✓	✓		
2	Volute	1	31061888	45	✓			
3	Shaft	1	31069352	6.2	✓	✓	✓	
4	Seal, Mechanical	1	33011197	0.28	✓	✓	✓	✓
5	Head, Suction	1	31061891	6	✓			
6	Key	2	29024424	0.03	✓	✓	✓	✓
7	Gasket	2	33069071	0.01	✓	✓	✓	✓
8	Housing, Bearing	1	31068247	22.6	✓	✓		
9	Nut	1	15066365	0.12	✓	✓	✓	✓
10	Washer, Flat	1	15066700	0.03	✓	✓	✓	✓
11	Bearing, Bronze	2	04068179	0.4	✓		✓	
12	Bearing, Bronze	1	04068179	0.4	✓	✓		
13	Bearing, Ball	1	04076810	1.12	✓	✓	✓	
14	Bearing, Ball	1	04076809	0.31	✓	✓	✓	
15	Ring, Snap	3	15025457	0.03	✓	✓	✓	
16	Cap, Drip	1	07074801	0.02	✓	✓	✓	
17	Cap, Bearing	1	07074800	0.5	✓	✓		
18	Bolt	16	15030859	0.04	✓			
19	Bolt	8	15030859	0.04	✓	✓		
20	Washer, Lock	16	15031068	0.01	✓			
21	Washer, Lock	8	15031068	0.01	✓	✓		
22	Washer, Flat	8	15031058	0.01	✓			
23	Plug	3	18030530	0.02	✓			
24	Plug	1	18030529	0.01	✓			
25	Screw, Set	1	15031265	0.01	✓	✓	✓	✓
26	Fitting, Grease	2	18027346	0.03	✓	✓		
27	Pump Assembly	1	31069350	106.78				
28	Powerhead Assembly	1	31085920	55.74				
29	Rebuild Kit	1	44077503	8.56				
30	Seal Kit	1	33078173	0.48				

WATEREND, PUMP ASSEMBLY

Series: FL

Part #: 31069350

WATEREND



EXPLODED VIEW

- > Frame mount. Long shaft.
- > 5" Grooved inlet x 4" grooved
- > Rotation: Clockwise
- > Pump manual