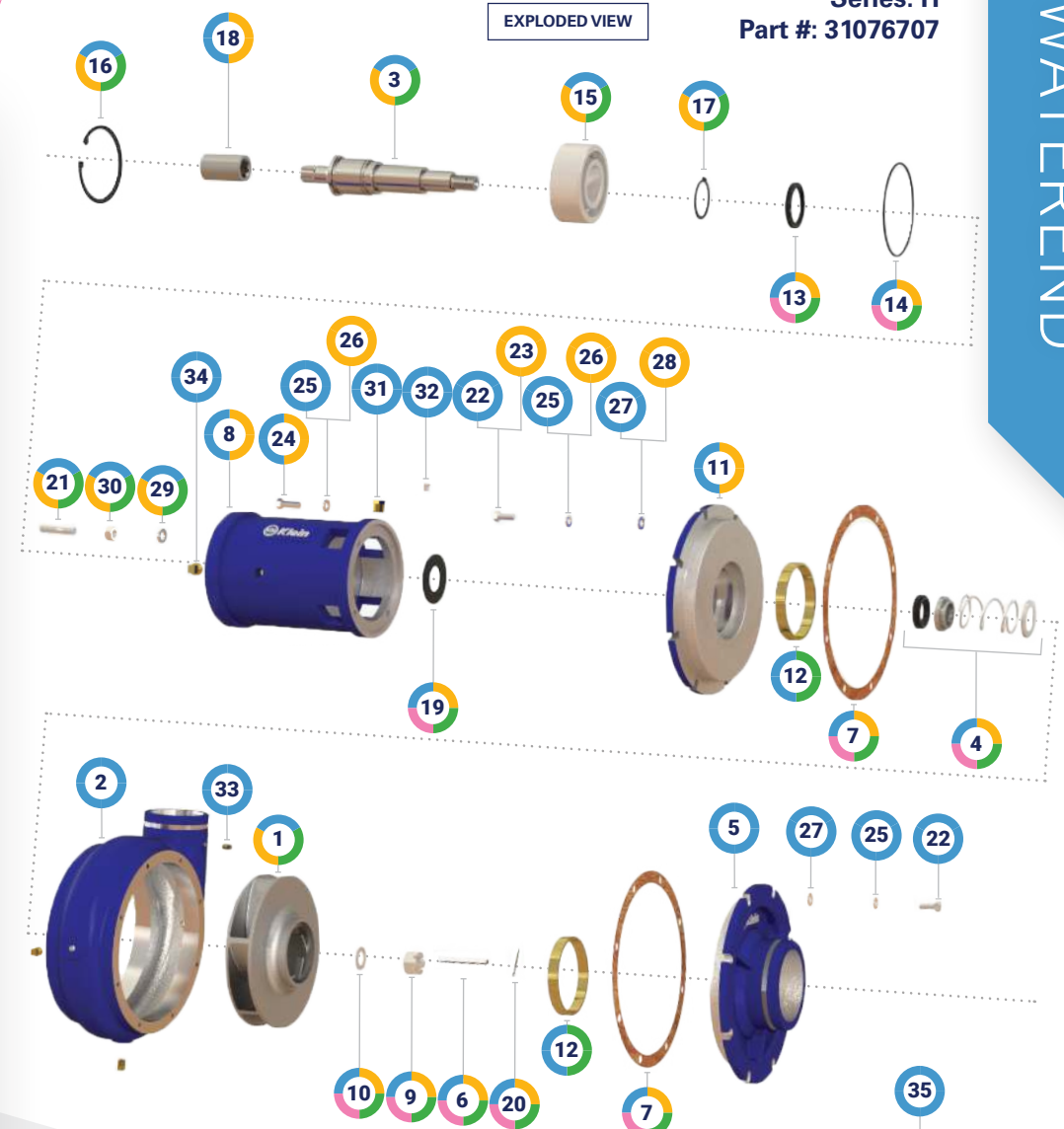


ITEM	DESCRIPTION	QUANTITY	PART NUMBER	WEIGHT (lbs.)	PUMP ASSEMBLY (31076707)	POWERHEAD ASSEMBLY (31080461)	REBUILD KIT (44076708)	SEAL KIT (33078174)
1	Impeller	1	31069664	17.6	✓	✓	✓	
2	Volute	1	31061888	45	✓			
3	Shaft	1	31076713	7	✓	✓	✓	
4	Seal, Mechanical	1	33024421	0.28	✓	✓	✓	✓
5	Head, Suction	1	31061891	6	✓			
6	Key	1	29024424	0.06	✓	✓	✓	✓
7	Gasket	2	33069071	0.01	✓	✓	✓	✓
8	Housing, Bearing	1	31020947	17.6	✓	✓		
9	Nut	1	15031466	0.14	✓	✓	✓	✓
10	Washer, Flat	1	15066700	0.05	✓	✓	✓	✓
11	Adapter	1	01061885	12	✓	✓		
12	Bearing, Bronze	2	04068179	0.4	✓	✓	✓	
13	Seal, Oil	1	33019942	0.6	✓	✓	✓	✓
14	O-Ring	1	33021137	0.05	✓	✓	✓	✓
15	Bearing, Ball	1	04076811	1.5	✓	✓	✓	
16	Ring, Snap	1	15021138	0.08	✓	✓	✓	
17	Ring, Snap	1	15011170	0.03	✓	✓	✓	
18	Coupling	1	10062399	1.25	✓	✓	✓	
19	Slinger	1	31016274	0.09	✓	✓	✓	✓
20	Pin, Cotter	1	29024164	0.04	✓	✓	✓	✓
21	Stud	4	15026388	0.06	✓	✓	✓	
22	Bolt	16	15030859	0.04	✓	✓	✓	
23	Bolt	8	15030859	0.04	✓	✓	✓	
24	Bolt	4	15030861	0.04	✓	✓	✓	
25	Washer, Lock	20	15031068	0.01	✓	✓	✓	
26	Washer, Lock	12	15031068	0.01	✓	✓	✓	
27	Washer, Flat	16	15031058	0.01	✓	✓	✓	
28	Washer, Flat	8	15031058	0.01	✓	✓	✓	
29	Washer, Lock	4	15031070	0.01	✓	✓	✓	
30	Nut	4	15031040	0.02	✓	✓	✓	
31	Bushing	1	18030569	0.01	✓	✓	✓	
32	Vent, Pressure	1	16014839	0.01	✓	✓	✓	
33	Plug	2	18030529	0.02	✓	✓	✓	
34	Plug	3	18031653	0.01	✓	✓	✓	
35	Pump Assembly	1	31076707	111.4				
36	Powerhead Assembly	1	31080461	59.03				
37	Rebuild Kit	1	44076708	28.7				
38	Seal Kit	1	33078174	1.33				

WATEREND, PUMP ASSEMBLY
Series: H
Part #: 31076707



- > Hydraulic
- > 5" Grooved inlet x 4" grooved outlet
- > Rotation: Clockwise
- > Pump manual

ASSEMBLED VIEW

WATEREND